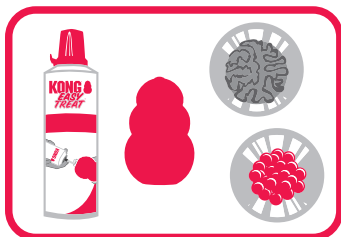


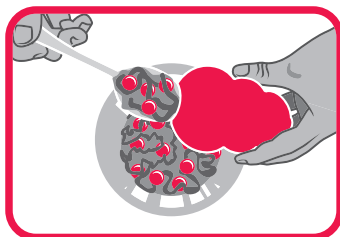
KONG®

Dogs Need to Play.™

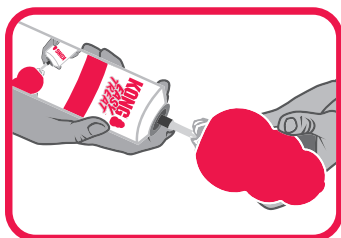
How to Stuff a KONG



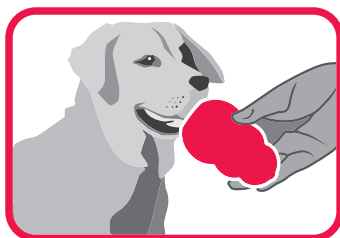
Mix



Fill



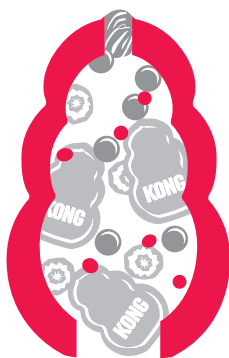
Seal



Give

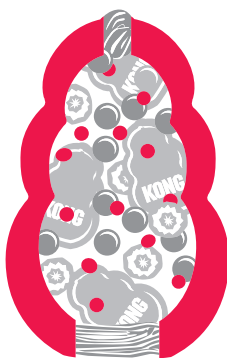
Bonus: For an added challenge, freeze KONG for 4-6 hours before giving to your dog.

Stuffing Levels



Easy

Stuffed lightly



Medium

Stuffed slightly tighter



Hard

Stuffed tightly

KONG®

Dogs Need to Play.™

Rubber Selection

Soft
Durable

KONG®
Puppy

KONG Puppy

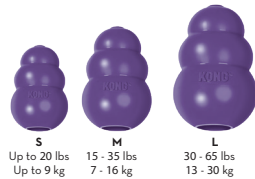
- Beginning to Light Chewers
- Designed for Puppy Teeth and gums
- Softest Rubber
- Blue & Pink



KONG®
SENIOR

KONG Senior

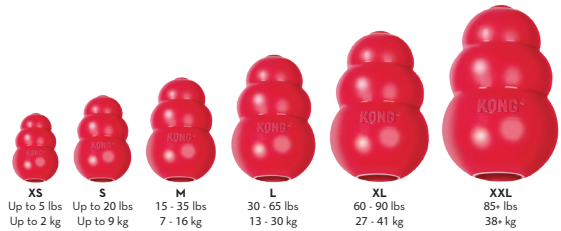
- Light Chewers
- Designed for Aging Teeth and gums
- Soft Rubber
- Purple



KONG®
Classic

KONG Classic

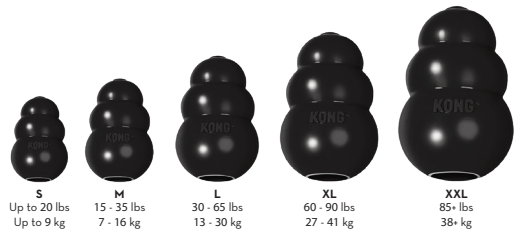
- Average Chewers
- Designed for most adult dogs
- Durable Rubber
- Red



KONG®
EXTREME

KONG Extreme

- Power Chewers
- Designed for extreme chewers
- Most Durable Rubber
- Black



Most
Durable